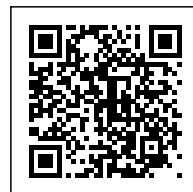
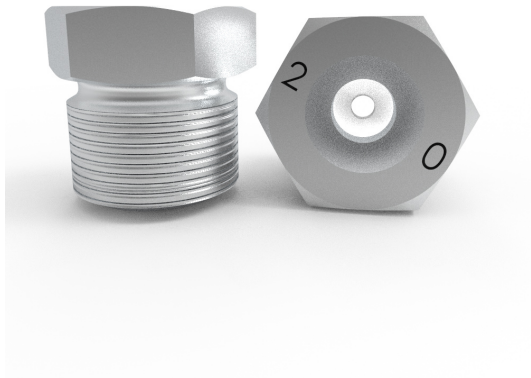


HH CERAMIC INSERTS 1/4"



Overview

Outer Hexagonal Head.



Characteristics

1/4" thread and ceramic tip for a better jet quality. With several orifices size they are used to perfectly calibrate the nozzles.

Items

Part Number	Description
85506.10	Ceramic insert TE 1/4"M DN 1,0 mm
85506.12	Ceramic insert TE 1/4"M, DN 1,2 mm
85506.14	Ceramic insert TE 1/4"M, DN 1,4 mm
85506.16	Ceramic insert TE 1/4"M, DN 1,6 mm
85506.18	Ceramic insert TE 1/4"M, DN 1,8 mm
85506.20	Ceramic insert TE 1/4"M, DN 2,0 mm
85506.24	Ceramic insert TE 1/4"M, DN 2,4 mm
85506.26	Ceramic insert TE 1/4"M, DN 2,6 MM
85506.28	Ceramic insert TE 1/4"M, DN 2,8 mm
85506.31	Ceramic insert TE 1/4"M, DN 3,1 mm
85506.34	Ceramic insert TE 1/4"M, DN 3,4 mm
85506.40	Ceramic insert TE 1/4"M DN 4,0 mm
85506.00	Plug TE 1/4M

GALLERY IMAGES

